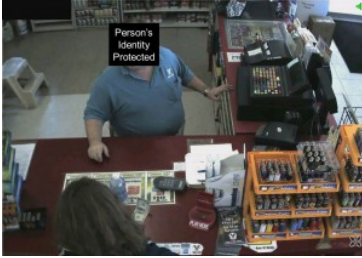


## Watching The Cash Register

### Monitoring Cash Register Activity

Full Image



Zoomed In On Details



?Our employees were opening the drawers inappropriately 30 - 50 times a shift and these stores were missing significant dollars at the cash registers.

EProcess expertise and better camera configurations, allowed us to see and eliminate this behavior within a couple of weeks.?

### Convenience Store - Oklahoma



**If you need to see better detail at the cash registers or in other areas, contact us at [Assessment@eprocessllc.com](mailto:Assessment@eprocessllc.com) or 219-841-7908.**